



0%  
Finance

WADEBRIDGE DENTAL

CARING FOR SMILES



# Invisalign and Smile Makeovers



# INVISALIGN



Invisalign is the world's leading clear aligner system. Having created over 11 million beautiful smiles around the world.

## Over **£2000** worth of savings with our Invisalign Packages

**FREE** Consultation and 3D digital smile simulation  
worth £220

**FREE** Whitening worth £500

**FREE** OPG X-Ray worth £95

**FREE** Fixed Retainers worth £460

**FREE** Removable Vivera retainers £800

**FROM**  
**£79/month**

### Invisalign Smile Days

Additional £200 off Invisalign packages when attending on our Smile Days and **FREE** Oral Health goodie Bag worth £40

# Try on a new smile in 60 seconds!

Scan the QR code below and take a selfie  
to start your SmileView experience



Alternatively, type in the link below.  
[www.invisalign.co.uk/SV/1027902](http://www.invisalign.co.uk/SV/1027902)

# Introduction to Invisalign

## Why have Invisalign?

Your appearance is one reason. Another is that straight teeth are easier to clean, decreasing the risk of tooth decay and gum disease.

We can also improve your bite, close and open spaces and then whiten your teeth and add composite bonding to create the smile of your dreams!

## How does it work?

A series of virtually Invisible clear aligners are custom made for your teeth to move them little by little.



Each aligner is worn for 1-2 weeks. They are removable giving you the flexibility to eat, drink, brush and floss during treatment as you want.

The total duration of treatment depends on the complexity. Typically from 3-18 months. Your dentist can provide you with more accurate information.

When you have your initial scan:



You will see a similar before and after image to below:



# Testimonials



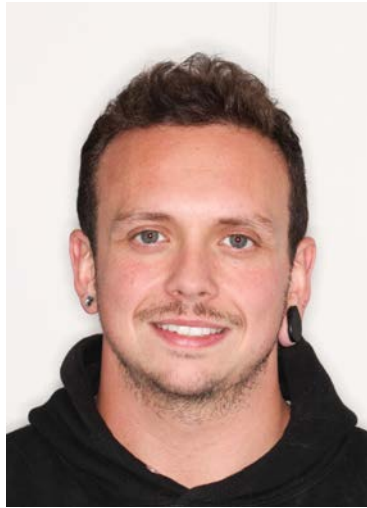
Before



After

*"Andy went above and beyond what I expected. I finally have the smile of my dreams" Clare Mason*

Invisalign, Whitening then composite bonding completed by Dr Andrew Taylor



*"I couldn't have hoped for a better experience. Andrew was super professional and efficient every visit. I can't believe how good my teeth look!" Alex Goodrich*

Invisalign, Whitening then composite bonding completed by by Dr Andrew Taylor



Before



After



*"The whole Invisalign experience was amazing. Andrew and his team always made me feel at ease and kept me fully informed at each stage. I have already recommended this to a friend"* Lizzie Scoble  
Invisalign, Whitening then composite bonding



Before



After

# Our Invisalign Dentists



Dr Andrew Taylor



Dr Kate Rowe



Dr Philippa McNee



Dr Zoe Rogers

# Frequently Asked Questions

## Does it hurt?

Invisalign can be uncomfortable when initially changing your aligners. However, this is temporary and mild. We often advise changing your aligners in the evening before going to sleep, taking a paracetamol or ibuprofen.

## How long does it take?

Everyone is different, which is why it is important to come along and speak to a dentist. However, it usually ranges 3 to 6 months for a lite case and 6 to 9 months for comprehensive.

## How long do I have to wear the trays for?

You have to wear them for 22 hours a day. You only remove the trays to eat, drinking hot drinks and for brushing your teeth. The more you wear your trays, the quicker your treatment will be.

## Can I drink with them in?

Yes. Although avoid very hot or sugary drinks.

## Can I eat with them in?

No.

## Am I suitable?

Invisalign can correct even complicated cases of misalignment however, your dentist would need to do a full assessment prior to any treatment. You will need to be dentally fit (healthy gums and teeth) before starting your Invisalign treatment.

## Do you offer finance?

Yes we do. We offer finance through an external company. We offer 10 months interest free finance or low rate finance for 1 - 5 years.

Go to [wadebridgedentalcare.co.uk](http://wadebridgedentalcare.co.uk) and click on 'finance' to learn more and calculate finance costs with our handy calculator.



0% APR finance available on amounts of £500 and over up to a maximum of 10 months.  
Low interest loans available over 1-5 years.

### Representative example:

Cash price £3,000, amount of credit £3,000 interest rate 0% pay £300 per month for 10 months **0% APR** representative, total amount payable £3,000.

Loan	Term (months)	APR	Monthly Payment	Total Payment
£3,000.00	10	0%	£300	£3000
£3,000.00	12	5.9%	£258	£3096
£3,000.00	24	7.9%	£136	£3264
£3,000.00	36	9.9%	£95.31	£3431.16
£3,000.00	48	10.9%	£77	£3696
£3,000.00	60	10.9%	£65	£3900

Ask at reception for further details and an application form.  
\*loans are subject to status, terms and conditions apply

# SMILE MAKEOVERS



Most people have whitening and composite bonding at the end of invisalign:

# Whitening

\*Included as part of Invisalign at Wadebridge Dental\*

## What is whitening

Whitening is a process of lightening the shade of your teeth.

## Can I have my teeth whitened in the chair?

At Wadebridge Dental we offer at home whitening only. This is because it gives the best long term stable results of all whitening systems

## What happens in the initial whitening appointment?

The dentist will take the initial shade of your teeth, scan your teeth to make bespoke whitening trays. You will return to collect the trays and a 'whitening kit' which contains the whitening gels and sensitive toothpaste to take home with you.

The dentist will instruct you on how to use the whitening gels – the gels will need to be applied to the customised trays and worn for a number of hours each day until you reach your desired shade.

## How long does it last?

Although your teeth will never return to the shade you started at, they can still stain and darken over time. This depends on your lifestyle, diet, smoking etc.

We advise regular visits to the dentist and hygienist for stain removal. Some patients like to do a whitening top up once a year – whitening gel can be purchased from the practice.

## Does it hurt

Some patients can experience a degree of sensitivity whilst whitening. We advise a sensitive toothpaste and patients are able to take a break from whitening their teeth i.e. rather than daily, you can wear the trays every other day. – Doing it this way may take slightly longer to get to your desired shade.



## Composite bonding with Dr Jason Smithson

Dr Jason Smithson is a world leading cosmetic dentist, highly regarded amongst dentists and his patients for creating some of the most beautiful smiles. Jason's special interest lies in composite bonding. Composite bonding is minimally invasive, so none, or very little, removal of your natural tooth. It is often carried out without any need for anaesthetic or drilling.

Invisalign patients often choose to have composite bonding after the straightening and whitening to cover up small imperfections such as chips in the enamel and uneven edges. Or it can be used to disguise the shape and size of a tooth. Tooth coloured material is bonded to the tooth surface and can last anything up to 10 -15 years. Regular visits to the dentist and hygienist are recommended to maintain your smile and dental health.



# Our Treatment Coordinators



**Aimee Whitfield**



**Lauren Buckley**

Contact our Treatment Coordinators by emailing  
[treatmentcoordinator@wadebridgedentalcare.co.uk](mailto:treatmentcoordinator@wadebridgedentalcare.co.uk)

call us on 01208 813816

Whatsapp 07508268714

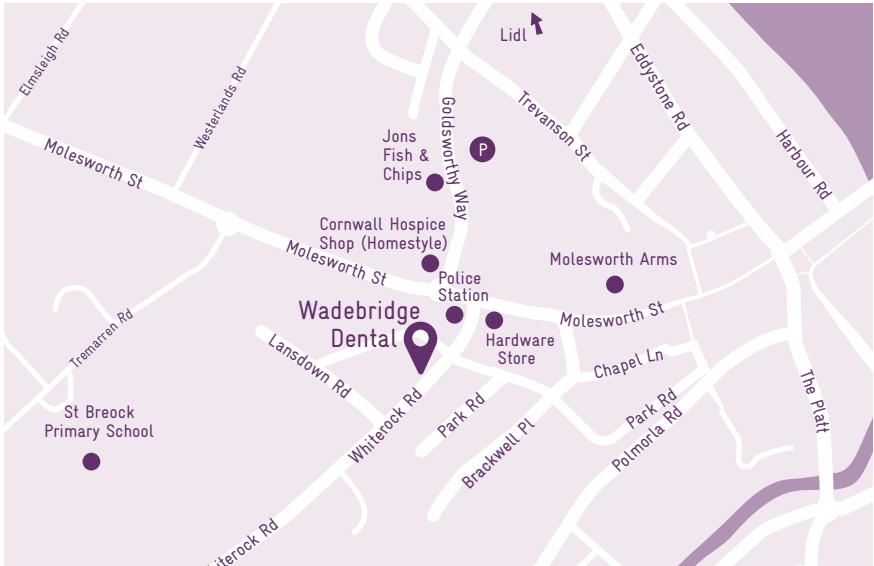
or scan this QR code  
to send us a message





# WADEBRIDGE DENTAL

CARING FOR SMILES



7-8 Park Place, Whiterock Road,  
Wadebridge, Cornwall PL27 7EA

Tel: 01208 813816

Email: [info@wadebridgedentalcare.co.uk](mailto:info@wadebridgedentalcare.co.uk)

 [wadebridgedentalcare](https://www.facebook.com/wadebridgedentalcare)

 [wadebridgedental](https://www.instagram.com/wadebridgedental)

 07508 268714

